

QUICK START GUIDE



BOOSTED



DO NOT RIDE WITHOUT READING THIS MESSAGE



YOUR BOARD CAN LOSE POWER AND BRAKES AT ANY MOMENT due to radio interference, a dead remote battery, unintentional release of the Engage Button, downhill overcharging of a full battery, and other factors. Only ride your Boosted board at speeds and on hills where you'd be comfortable without power and brakes.

BRAKING DOWNHILL ON A FULL BATTERY WILL CAUSE BOARD SHUTDOWN since regenerative braking will overcharge the battery. To prevent this from happening, the remote will warn you by beeping, and you'll lose your braking power. Safely come to a stop before this happens, and ride on flats or uphill to drain the battery before attempting downhill again.

THE THROTTLE IN EXPERT AND PRO MODE IS EXTREMELY SENSITIVE to make the board responsive and fun, but it also means fast or sudden inputs can easily cause you to fall off. Start by trying to move forward as slowly as possible in these modes.

HILLS AND HIGH SPEED CAN BE VERY DANGEROUS because crashes can cause serious injuries. Be extra careful when pushing the limits of the board, even if you're an experienced rider.

CARS AND OTHER VEHICLES CAN KILL YOU, so always be aware of your surroundings when riding in the presence of other vehicles. Ride defensively and assume other vehicles can't see you. Remember that your board may lose power and brakes at any moment. Be aware of the laws that govern the use of your board on public roads, bike paths, sidewalks, or other places that you may ride.

ALWAYS WEAR A HELMET. Other safety gear, like gloves, pads, and long sleeves, is highly recommended.



WARNING!



WARNING: Whenever you ride a Boosted board, you risk death or serious injury from loss of control, collisions, and falls. To ride safely, you must read and follow all warnings and instructions in this manual.

WARNING: Always wear a helmet when riding. Never ride in water, wet surfaces, in the rain, slippery or uneven surfaces, steep hills, traffic, cracks, train tracks, gravel, rocks, or any obstacles that could cause a loss of traction. Avoid night riding, areas with poor visibility, and narrow spaces.

WARNING: Do not ride a Boosted board in environments, on inclines, or at speeds where you would not be safely in control of an unpowered skateboard. In the event of wireless interference or battery fault, you may need to rely on skating techniques like footbraking or sliding to stop. For more information, visit the online tutorials at www.support.boostedboards.com.



WARNING: AVOID WATER!

Riding in wet conditions or through puddles can damage the board's electronics and cause the board to lose power or stop suddenly, causing a risk of loss of control or falls. Do not ride in wet conditions or through puddles. Damage to the board due to water exposure is not covered under warranty.



WARNING: PINCH POINTS

Keep fingers, hair, and clothing away from belts, motors, wheels, and all moving parts.



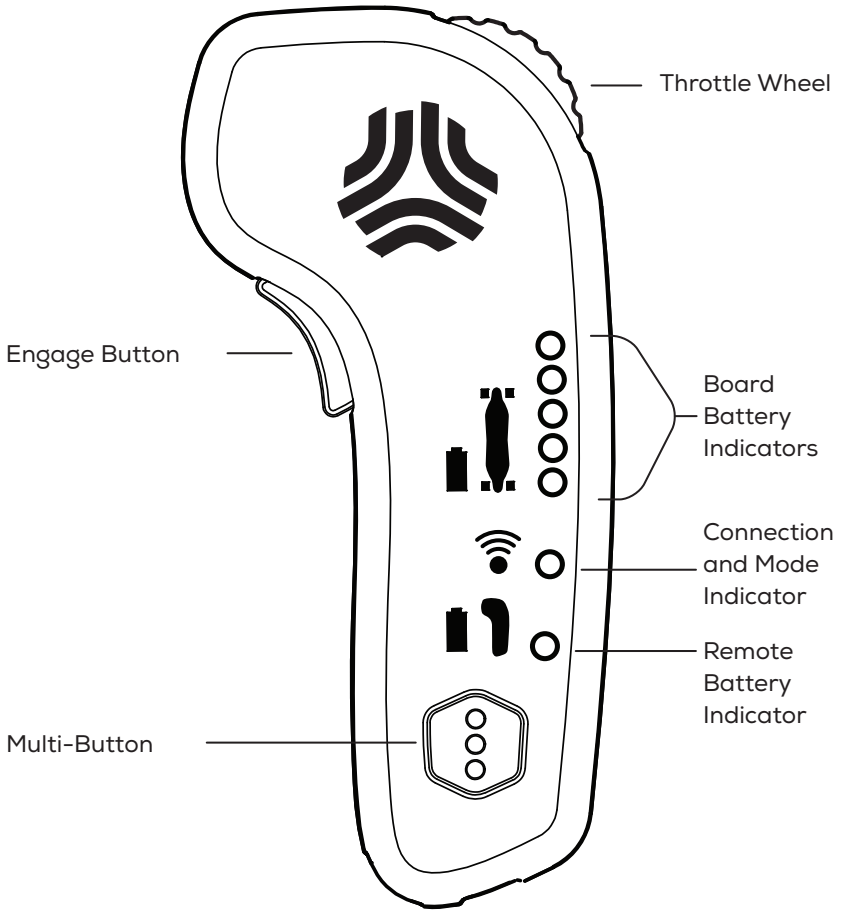
WARNING: RISK OF ELECTRIC SHOCK!

Do not open or tamper with electronics housings, which also voids the warranty.

Please ride responsibly and respect those around you. How you ride will determine how people view this new mode of transportation.

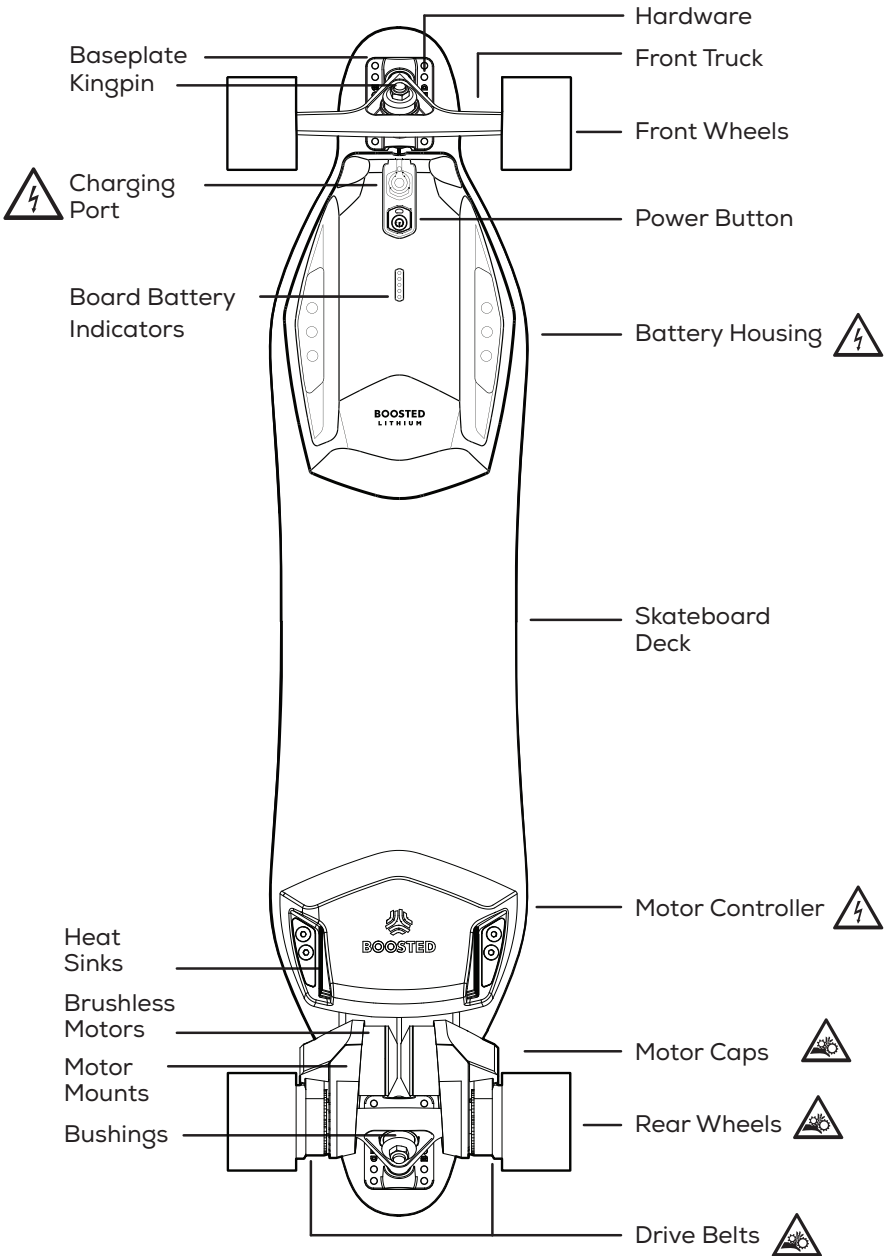
1

Remote Glossary



2

Board Glossary



3

Get Ready

- Always wear a helmet.
- Find an open, flat area with clean pavement for your first ride.
- Read the warnings on the skateboard and at the beginning of this manual.
- For more details on riding, check out the online tutorials at www.support.boostedboards.com.
- Other protective equipment is highly recommended.

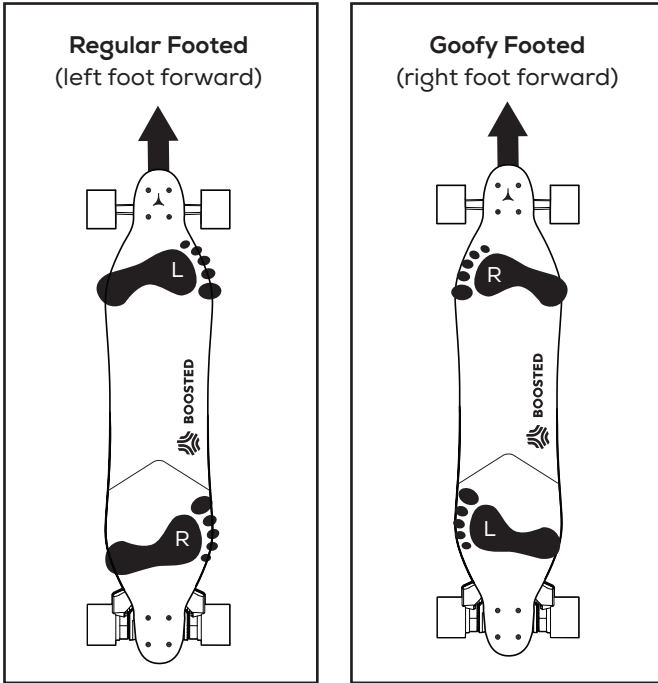


AVOID THINGS THAT CAN CAUSE LOSS OF CONTROL OR COLLISION:

<p>Gravel</p>	<p>Water</p>	<p>Uphill</p>	<p>Downhill</p>
<p>Cracks</p>	<p>Larger Rocks</p>	<p>Tracks</p>	<p>Grates/Drains</p>
<p>Traffic</p>	<p>Night Time</p>	<p>Obstacles</p>	<p>Poor Visibility</p>

ARE YOU A “REGULAR” OR “GOOFY” FOOTED RIDER?

Typically, if you kick a ball with your right foot, you are a regular footed rider. However, this is not always the case! Try both stances to see what feels best. If you don't know which to choose, one advantage of riding goofy footed is that you can see traffic better.

**STANCE**

Your Boosted board has a lot of power. Follow these tips to ensure a safe riding experience:

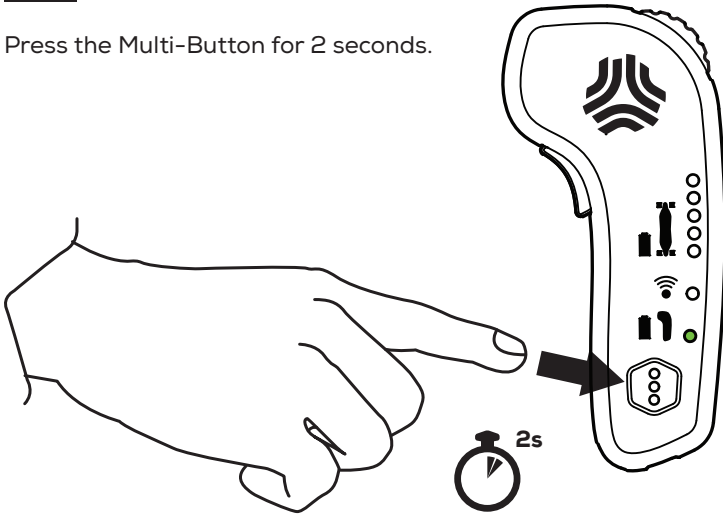
- Move the Throttle Wheel in small increments.
- Keep a wide stance on the board.
- Keep a low center of gravity.
- Lean forward when accelerating.
- Lean backwards when braking.



5

Power On/Off the Remote

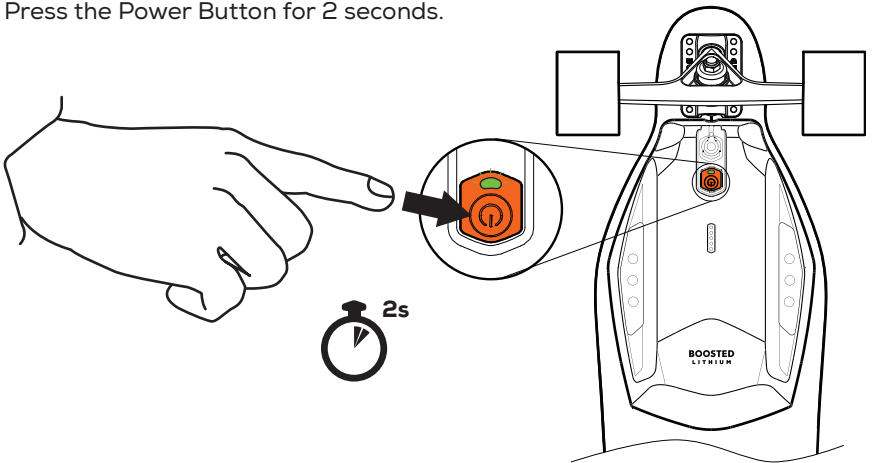
Press the Multi-Button for 2 seconds.



6

Power On/Off the Board

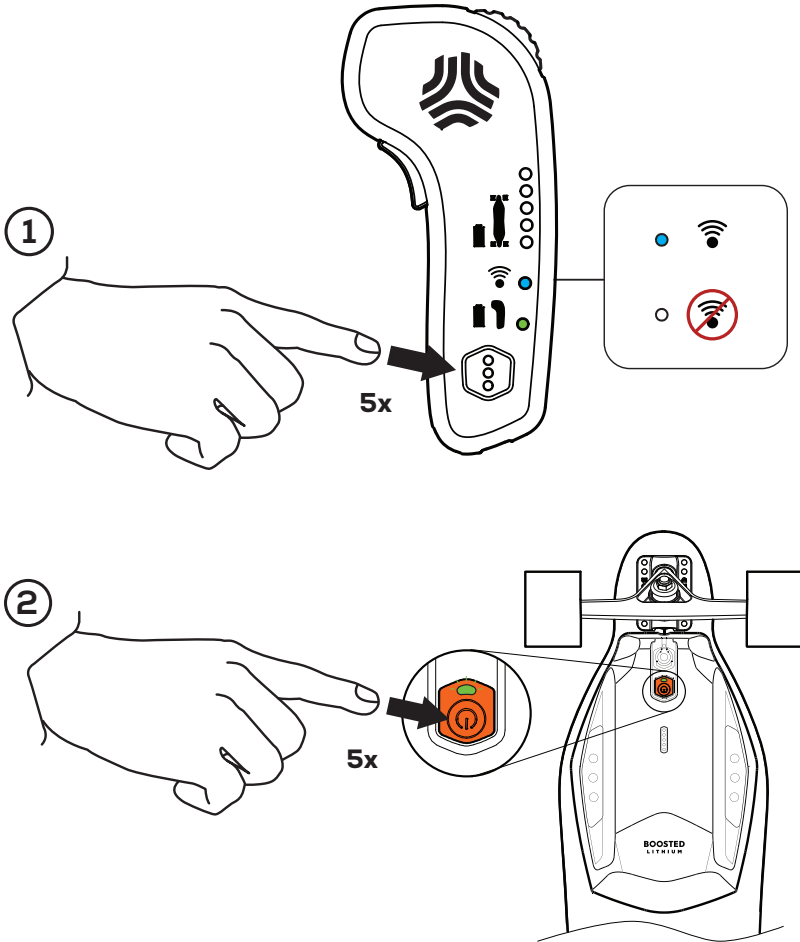
Press the Power Button for 2 seconds.



7

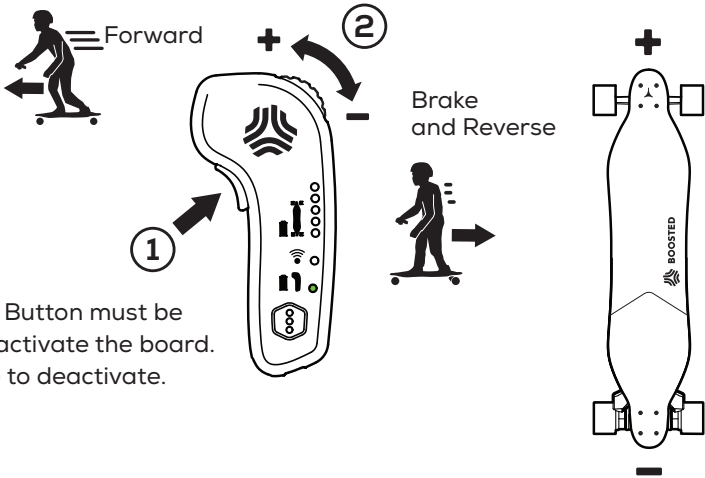
Check the Remote-Board Pairing

The Connection and Mode Indicator will turn solid when the board is paired. If the indicator is not lit, check that the board is powered on. If the light is still not lit, press the Multi-Button on the remote 5 times (5x), followed by pressing the Power Button on the board 5 times (5x) rapidly to pair your board. Your board and remote have already been paired in the factory, so you typically only need to do this when pairing to a new board or remote.



8

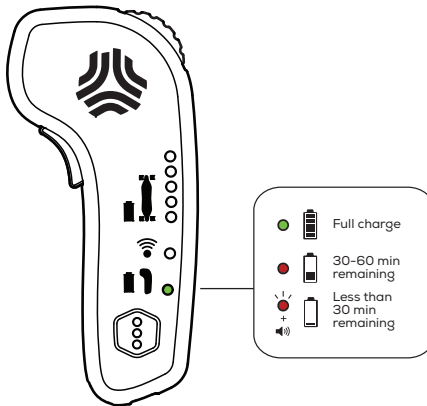
Operating the Board with the Remote



Engage Button must be held to activate the board. Release to deactivate.

9

Check the Remote Battery Life

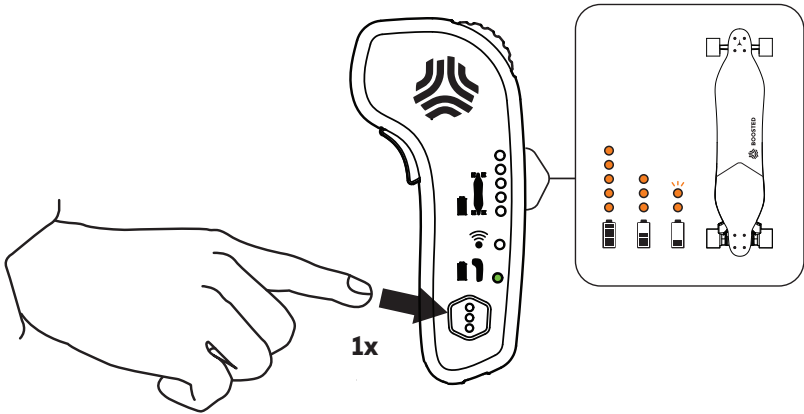


WARNING: Never start a ride with a low remote battery indication.

10

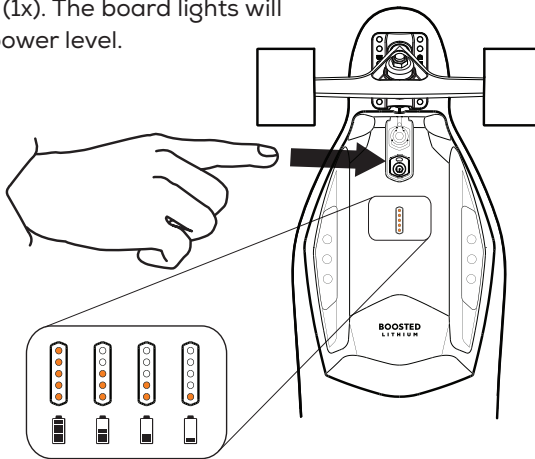
Check the Board Battery Life From the Remote

Click the Multi-Button 1 time (1x) after pairing with the board. Lights will indicate remaining battery life.

**11**

Check the Board Battery Life From the Board

When the board is on, press the Power Button 1 time (1x). The board lights will indicate the power level.



Change the Ride Mode

This board ships in beginner mode. Before following the instructions below to switch modes, make sure you have mastered the use of the remote and board.

BEGINNER: Limited acceleration, top speed of 11 mph, no hills.

ECO: Moderate acceleration, top speed of 16 mph, small hills.

EXPERT: High acceleration, top speed of 20 mph, 20% grade hills.
(Single 18 mph, 10% grade hills)

PRO: Max acceleration, top speed of 22 mph, 25% grade hills.
(Not available on the Single or Dual)

WARNING: The Throttle Wheel is much more sensitive in expert and pro mode. To avoid getting thrown off the back of the board, follow these tips:

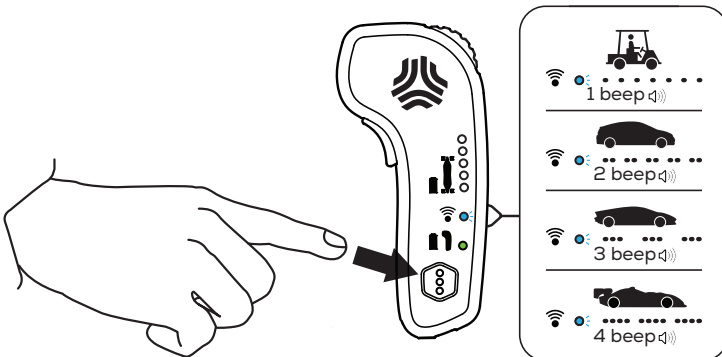
- Start by moving forward as slowly as possible.
- Move the Throttle Wheel in small increments.
- Keep a wide stance on the board.
- Keep a low center of gravity.
- Lean forward when accelerating.
- Lean backwards when braking.



TO CYCLE THROUGH RIDE MODES:

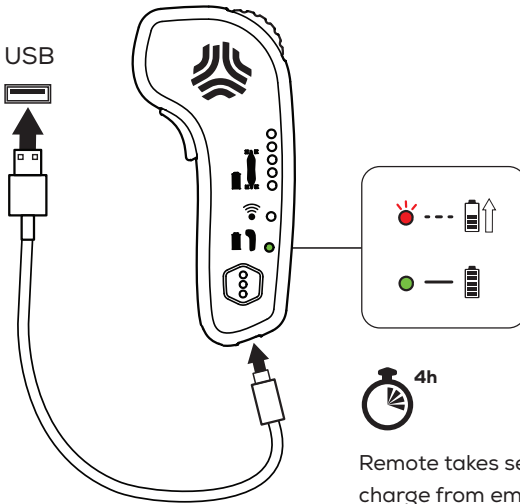
Tap the Multi-Button 3 times (3x) rapidly to change modes.

- Count the LED flashes to identify which mode you are in.
- Count the AUDIO beeps to identify which mode you are in.



13

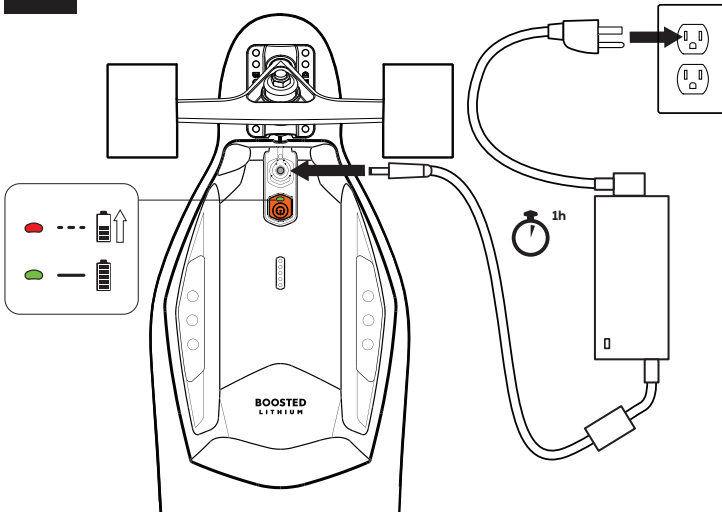
Charge the Remote



Remote takes several hours to charge from empty. If the remote is charged every time the board is charged the remote should finish charging before the board.

14

Charge the Board

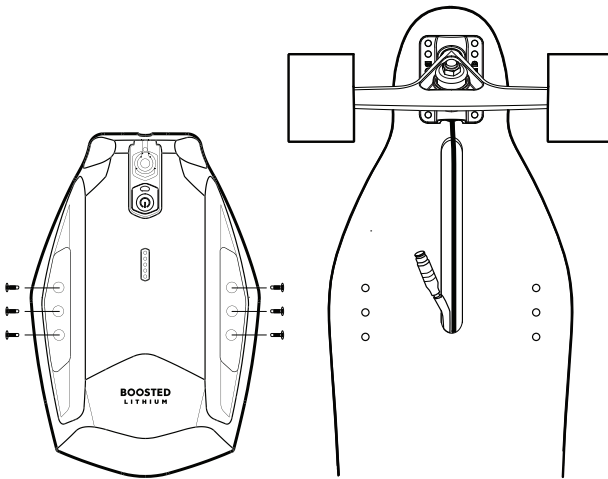


Warning: Never leave board unattended while charging.

15

To Remove the Battery Pack

- First ensure that the board is turned off.
- Place the board upside down on a flat surface. Using a 4mm hex wrench, remove the six bolts fastening the battery pack to the deck.
- Lift the battery pack to reveal the connector between the deck and battery pack.
- Carefully twist and pull the connector apart.



16

To Replace the Battery Pack

- To insert a new battery pack, align the grooves on both ends of the connector (board & battery pack).
- Insert, push together, and twist the two ends of the connector together. Make sure to tighten the connector fully to make a good seal.
- Ensure the connector lays flat within the groove of the board side by side with the accessory wire.
- Replace and tighten the bolts with the hex wrench.

This manual is a quick start guide intended for someone with some skateboarding experience to get started. For more advanced riding techniques or more detailed tutorials on learning how to ride, please visit our website: www.support.boostedboards.com.

GETTING STARTED

- How to stand on the board
- How to turn
- How to find a good spot to practice

ADVANCED TECHNIQUES

- How to footbrake
- How to ride uphill and downhill safely
- What to look for in traffic

MAINTENANCE

- Pre-ride inspection
- Routine maintenance

This equipment has been tested and found to comply with the limits for a Class B digital device, pursuant to part 15 of the FCC Rules. These limits are designed to provide reasonable protection against harmful interference in a residential installation. This equipment generates, uses, and can radiate radio frequency energy. If not installed and used in accordance with the instructions, it may cause harmful interference to radio communications. However, there is no guarantee that interference will not occur in a particular installation.

If this equipment does cause harmful interference to radio or television reception, which can be determined by turning the equipment off and on, the user is encouraged to try to correct the interference by one or more of the following measures:

- Reorient or relocate the receiving antenna.
- Increase the separation between the equipment and receiver.
- Connect the equipment into an outlet on a circuit different from that to which the receiver is connected.
- Consult the dealer or an experienced radio/TV technician for help.

Prolonged exposure to sunlight may discolor or weaken the plastic cases, as they are not UV Rated.

18

Warnings and Safety Information

Product Specifications

Model S2 Skateboard: Rated Input: 54.4Vdc, 2-5A

Model R2 Remote: Rated Input: 5Vdc, 500mA

Operating Temperature: 0-40°C, 10-90% RH

Battery Safety and Handling Information



Risk of explosion if battery is replaced by an incorrect type.
Dispose of used batteries according to instructions.



Failure to follow these safety instructions could result in fire, electric shock, or other injury or damage to the Boosted Model S2 skateboard and Boosted Model R2 remote or other property.



IMPORTANT Safety and Handling Information

Do not attempt to disassemble the product without consulting Boosted's service department. Should your unit need service, contact Boosted support at support@boostedboards.com.

Changes or modifications made to this product not expressly approved by Boosted may void the user's warranty.

Boosted Model S2 skateboard is intended only for use with Boosted Model B2 series batteries.

Do not shock the battery by dropping it or throwing it.

Always keep the battery out of reach of infants or small children.

Never expose this product or the battery to any liquids.

Never throw the battery into a fire, as that could cause the battery to explode.

Never short-circuit the battery by bringing the connector terminals in contact with another metal object. This could cause personal injury or fire and could also damage the battery.

Your device contains an internal rechargeable lithium-ion battery which may present a risk of fire or chemical burn if mistreated. Do not charge or use the unit in a car or similar place where the inside temperature may be over 40°C.

Battery Charging Information



The charger supplied with the electric skateboard should be regularly examined for damage to the cord, plug, enclosure, and other parts. In the event of such damage, the skateboard must not be charged until the charger has been repaired or replaced.

Unplug the charger and disconnect it from the skateboard when not in use.

CAUTION

Only use the dedicated charger provided for this unit.

For indoor use only. Do not expose the charger to liquid, moisture or extreme humidity. Do not charge Boosted Model S2 skateboard or Boosted Model R2 remote outdoors or in the rain.

WARNING

Power cord is used as a disconnection device. To fully de-energize equipment for service, disconnect the charger power cord.

Stop charging the skateboard and/or remote if charging isn't completed within the specified time.

Stop charging the skateboard and/or remote if the batteries become abnormally hot, show signs of odor, discoloration, deformation, or if abnormal conditions are detected during use, charge, or storage.

Do not charge the skateboard and/or remote if the battery enclosure becomes cracked, swollen, or shows any other signs of misuse. Discontinue use immediately and promptly dispose of unit.

Product and Battery Disposal Information

Your device should not be placed in municipal waste. Please check local regulations for proper disposal of electronic products.

If this unit shows any type of damage, such as bulging, swelling, or disfigurement, discontinue use and immediately contact customer support by calling (650) 933-5151.

Dispose of used batteries in accordance with the prevailing community regulations that apply to the disposal of batteries.

Never dispose of used batteries with other ordinary solid wastes.

Batteries contain toxic substances.

ATTENTION : Ne roulez pas avec un skateboard Boosted dans des environnements, des pentes ou à des vitesses auxquels vous ne vous sentez pas en sécurité de rouler avec un skateboard sans moteur. Dans l'éventualité d'une interférence du système sans fil ou d'un problème de batterie, vous devrez vous reposer sur des techniques de skateboard, comme par exemple freiner avec le pied ou dérapier pour s'arrêter. Pour plus d'informations, visitez les tutoriels en ligne sur www.boostedboards.com/training.



ATTENTION : EVITEZ L'EAU !

Votre skateboard Boosted n'est pas étanche et rouler sur des surfaces mouillées peut provoquer une perte de contrôle du skateboard. Les pièces électroniques et les moteurs peuvent résister à l'eau provenant de flaques d'eau ou de routes mouillées mais la planche, les roulements et autres composants peuvent s'endommager au contact de l'eau. Les dommages dus à l'eau ne sont pas couverts par la garantie.



ATTENTION : ZONES DE PINCEMENT !

Gardez vos doigts, cheveux, et habits éloignés des courroies, moteurs roues ainsi que de toutes les pièces mobiles.



ATTENTION : RISQUE DE CHOC ELECTRIQUE !

N'ouvrez ou n'altérez pas le boîtier électronique, ce qui annulerait la garantie.

Spécifications du Produit

Skateboard modèle S2: Puissance d'entrée nominale: 54.4Vdc, 2-5A
Télécommande modèle R2: Puissance d'entrée nominale: 5Vdc, 500mA
Température de fonctionnement: 0-40°C, 10-90% humidité relative

Information concernant la sécurité de la batterie et la manipulation

PRUDENCE

Il y a un risque d'explosion si la batterie est remplacée par une autre d'un type différent. Disposez des batteries usagées en suivant les instructions.

ATTENTION

Tout manquement de suivre ces règles de sécurité peut provoquer un embrasement, un choc électrique, ou d'autres blessures et dommages au skateboard Boosted modèle S2 et à la télécommande Boosted modèle R2 ou à d'autres accessoires.



IMPORTANT : Information concernant la sécurité et la manipulation

Ne tentez pas de démonter le produit sans consulter le département Service de Boosted. Si votre appareil doit être réparé, contactez le département Support de Boosted à l'adresse support@boosteboards.com.

Les changements ou modifications de ce produit qui ne sont pas expressément approuvés par Boosted peuvent annuler l'autorisation de l'utilisateur à utiliser l'équipement.

Le skateboard Boosted modèle S2 est uniquement destiné à être utilisé avec des batteries Boosted modèle B2.

Ne malmenez pas la batterie en la laissant tomber ou en la jetant.

Gardez toujours la batterie hors de portée des bébés ou des petits enfants.

Ne jamais exposer ce produit ou la batterie à des liquides.

Ne jetez jamais la batterie dans un feu, cela pouvant provoquer une explosion de la batterie.

Ne court-circuitez jamais la batterie en mettant les bornes de connexion en contact avec un autre objet métallique. Cela pourrait causer des blessures ou un incendie, et pourrait également endommager la batterie.

Votre appareil contient une batterie interne rechargeable au lithium-ion qui peut présenter un risque d'incendie ou de brûlure chimique si elles sont malmenées. Ne rechargez pas ou n'utilisez pas l'appareil dans une voiture ou un lieu similaire où la température intérieure peut être supérieure à 40°C.



Information concernant la recharge de la batterie

Le chargeur fourni avec le skateboard électrique doit être régulièrement examiné pour endommagement du cordon, de la prise, du boîtier, et des autres parties du skateboard. Dans le cas d'un tel dommage, le skateboard ne doit pas être rechargé jusqu'à ce que le chargeur ait été réparé ou remplacé.

Débranchez le chargeur et déconnectez-le du skateboard lorsqu'ils ne sont pas en cours d'utilisation.



PRUDENCE



N'utiliser que le chargeur dédié fourni avec ce produit.

La recharge de la batterie doit se faire à l'intérieur uniquement. Ne pas exposer le chargeur à des liquides ou à un environnement humide (faible ou extrême). Ne rechargez pas le skateboard Boosted modèle S2 ou la télécommande Boosted modèle R2 à l'extérieur, ou sous la pluie.

 **ATTENTION** 

Le cordon d'alimentation est utilisé comme un dispositif de déconnexion. Pour totalement décharger des équipements dus pour une maintenance, débranchez le cordon d'alimentation du chargeur.

Arrêtez le chargement du skateboard et / ou de la télécommande si le rechargement n'est pas terminé dans le délai imparti.

Arrêtez la recharge du skateboard ou de la télécommande si les batteries deviennent anormalement chaudes, démontrent des signes olfactifs, de décoloration ou de déformation, ou des conditions anormales sont détectées lors de l'utilisation, de la recharge ou du stockage.

Ne rechargez pas le skateboard ou la télécommande si le boîtier de la batterie est fissuré, enflé, ou montre d'autres signes d'abus. Cessez immédiatement d'utiliser la batterie et disposez rapidement.

Information concernant la mise au rebut du produit et de la batterie:

Votre appareil ne doit pas être placé dans les déchets municipaux. Vérifier les réglementations locales pour l'élimination des produits électroniques.

Si cet appareil montre tout type de dommage, comme par exemple un gonflement ou une défiguration quelconque, cessez d'utiliser et disposez rapidement.

Jetez les batteries usagées conformément aux règlements communautaires en vigueur applicables à l'élimination des batteries.

Ne jamais jetez les batteries usagées avec d'autres déchets ordinaires.

Les batteries contiennent des substances toxiques.

WARRANTY

LIMITED WARRANTY

This board is covered by a 180 day manufacturer's warranty that covers defects in workmanship and material. This does not cover damage caused by abuse, misuse, negligence, accidents, or riding in water.

If the product has a manufacturing defect within 180 days of ship date, contact warranty@boostedboards.com before shipping the board back in order to get a return authorization.

FOR ALL RETURN AND WARRANTY SHIPPING:

Please keep your shipping box. The warranty does not include damage from return shipping in insufficient packaging.

For any concerns regarding your board, please contact Boosted's customer service by going to www.boostedboards.com, or by emailing service@boostedboards.com.

Boosted can also be reached by calling: (650) 933-5151.



BOOSTED